

*Providing easy-to-implement, cost-effective
and reliable high-speed printing solutions*



IBM Infoprint 2085 and Infoprint 2105



combine a true data-center-centric controller with copying capabilities, both the Infoprint 2085 and Infoprint 2105 are easy-to-use solutions that can help you gain a competitive edge.

Improving productivity with high-speed printing

The Infoprint 2085 and Infoprint 2105 meet the need for fast output speed, moderate duty cycles and flexible capabilities while helping you achieve low operating costs. Designed to meet IBM @server iSeries™ and IBM @server zSeries™ customer requirements, while remaining compatible with other systems, the Infoprint 2085 and Infoprint 2105 are high-function production printers that facilitate consolidation between information technology and reprographics production centers. They are also ideal for distributed environments where they can serve as consolidated printing and copying solutions.

Highlights

- ***Offers high-quality, high-function cutsheet printing with copying capabilities***
- ***Can help reduce total cost of printing and enable operating efficiency***
- ***Provides a powerful IBM controller for optimal performance and flexibility***
- ***Prints at speeds of up to 85 or 105 ppm respectively with 600 x 600 dpi resolution***

Capitalizing on versatility for business success

To enhance productivity and enable operating efficiency, companies need flexible, integrated output solutions. These solutions must offer fast print speeds, exceptional quality, a wide range of capabilities and easy system integration—all at an attractive total cost of ownership.

The IBM Infoprint® 2085 and Infoprint 2105 are full-function, high-speed printing systems that operate at speeds of up to 85 and 105 pages per minute (ppm) respectively, and that provide 600 x 600 dots-per-inch (dpi) resolution to produce high-quality images and graphics. Among the first to effectively

The Infoprint 2085 and Infoprint 2105 are the only printers in their class and price range that have the IBM Intelligent Printer Data Stream™ (IPDS™) as a standard feature. IPDS is a printer-device datastream that controls printer functions and enables two-way communication between the printer and the printer driver. IPDS printing provides for a cooperative print management system that can help improve error recovery, speed and reliability. The Infoprint 2085 and Infoprint 2105 also support Portable Document Format (PDF), Adobe® PostScript® and Printer Control Language (PCL), Xerox datastreams (via transform), and automatic switching between datastreams.

To provide enhanced capabilities, the IBM Infoprint 2085 and Infoprint 2105 are equipped with an integrated scanner that supports digital scanning at up to 72 impressions per minute (ipm). Powerful, yet easy to use, all functions of the integrated scanner can be accessed through a large, intuitive touch panel. By consolidating your production printing and copying needs into a single device, you can achieve optimum efficiency.

Easily manage resources and submit print jobs through printer-resident Web pages.

Enhancing operating efficiency and controlling costs

Designed as full-function, cost-effective multifunction solutions, the Infoprint 2085 and Infoprint 2105 can help increase productivity while reducing the total cost of printing. The combination of a base maintenance plan option with a cost-effective monthly fee and click charges that include toner presents attractive overall operating costs—making the Infoprint 2085 and Infoprint 2105 very affordable products.

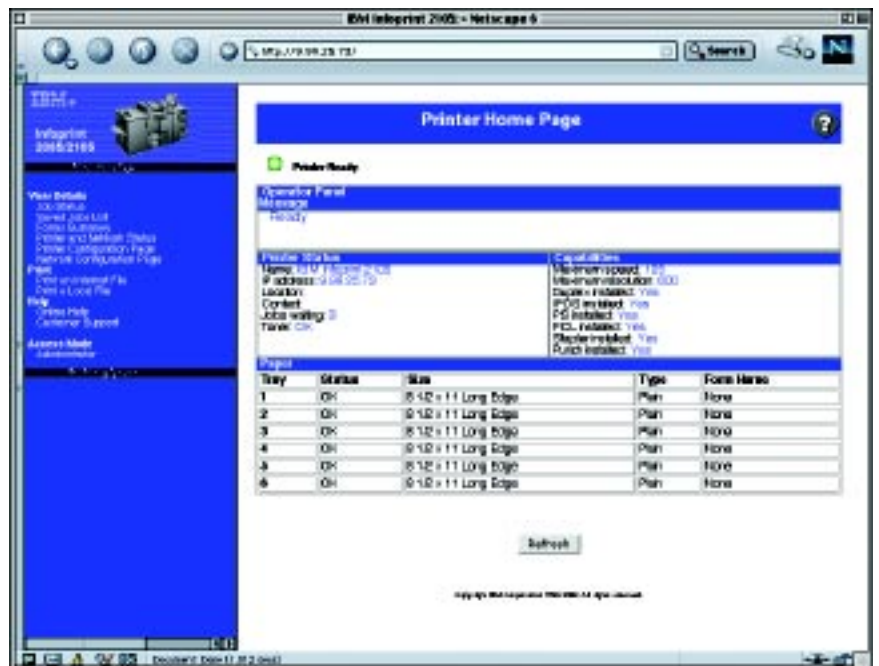
Both printers can meet your volume and cost requirements by offering up to six input trays that hold up to 7,550 sheets—allowing you to intertwine different colored stock without paying for manual insertion. Output trays feature high-capacity stitcher/stacker capabilities with up to a 3,000-sheet

capacity, and a top tray holds up to 500 sheets. Standard finishers support stapling in numerous positions, and optional hole-punch kits are available.

Maximizing flexibility and efficiency with robust features

The Infoprint 2085 and Infoprint 2105 support multiple connectivity options. In addition to a walk-up touchscreen, easy-to-use graphical user interface (GUI) and superior status notification, the IBM controller—in conjunction with other IBM software products and optional features—offers the following advanced functions:

Printer-resident Web pages—Operators and administrators can view printer-resident Web pages through a browser using the printer Internet Protocol (IP) address. You can use Web-pull printing or direct printing to submit print jobs.



e-mail printing and notification—A user can send e-mail with attachments (PostScript, PDF and PCL) to the printer, which can print directly from the e-mail. Web-pull printing and e-mail printing are valuable tools to remote sales users, who can have the printer automatically prepare customer collateral for pickup upon arrival at the office. The Infoprint 2085 and Infoprint 2105 can also send notification to cell phones via an IP address to ensure that the user or operator receives immediate status information.

Send and save—Any user can send jobs to be held for later release, and can use personal identification numbers for added security.

IBM Network Printer Manager (NPM) for Microsoft® Windows®—IBM NPM has an easy-to-use GUI, allowing network administrators to quickly set up Notification Manager for the Infoprint 2085 and Infoprint 2105. Whether printers are low on toner, out of paper or need other attention, these notifications can quickly get the right information to the right resources, helping to improve printer uptime and end-user productivity. Additionally, administrators can use NPM to install and configure IBM network printers on local area networks, as well as to monitor and display printer status using Simple Network Management Protocol (SNMP), an open-systems industry standard.

Printers at a glance	IBM Infoprint 2085	IBM Infoprint 2105		
Hardware components				
Printer controller	500 MHz PowerPC 750L processor; 10GB hard drive; 10/100 BaseT Ethernet; 256 MB RAM; optional Token-Ring			
Copier controller	2 x 4.3GB hard drives 2 x 48MB RAM	2 x 10.2GB hard drives 2 x 48MB RAM		
Print speed (up to)	85 ppm (letter/A4)	105 ppm (letter/A4)		
Copy speed (up to)	72 ipm (letter/A4)	72 ipm (letter/A4)		
Usage (max/mo. in millions)¹	Up to 800,000 impressions per month (letter/A4)			
Paper handling				
Standard input capacity	Two 1,000-sheet dual drawers; two 500-sheet drawers; optional high-capacity feeder; two 1,000-sheet drawers; one 2,550-sheet drawer			
Standard output capacity	One 3,000-sheet stacker with stapling capability (up to 100 sheets); one 500-sheet top tray exit; optional hole punch 2, 3 or 4 (depends on geography)			
Media sizes	5.5" x 8.5" (statement); 7.25" x 10.5" (executive); 8" x 10"; 8" x 13"; 8.5" x 13" (folio); 10" x 14"; 8.5" x 11" (letter); 8.5" x 14" (legal); 8" x 10.5"; 8.25" x 13"; 11" x 17" (ledger); 11" x 15"; 148 x 210 mm (A5); 210 x 297 mm (A4); 297 x 420 mm (A3); 257 x 264 mm (B4); 182 x 257 mm (B5-JIS); 170 x 210 mm; 182 x 210 mm; 210 x 340 mm; custom (feeds out of drawers 2 and 3, no hole punch or staple, runs at half speed)			
Media types/weights	16 lb bond to 110 lb index (60 g/m ² to 200 g/m ²); xerographic bond; rag bond; ledger grain long; dual-purpose; cover stock; recycled; short/long grain stocks; labels; transparencies			
Environmental conditions				
Permitted ranges: temperature	50 to 90 deg. F (10 to 32 deg. C)	50 to 80 deg. F (10 to 27 deg. C)		
Humidity	10% to 85% RH	10% to 85% RH		
Acoustics	72 dbA (operating); 63 dbA (idle)	74 dbA (operating); 69 dbA (idle)		
Communication protocols	TCP/IP; IPX/SPX; Ethernalk/Tokentalk; NetBIOS/NetBEUI; IPP			
Print language support	Standard—IPDS; Optional—PCL5e, PCL6, PS 3, PDF, LCDS/Metacode (with M.I.S. Print)			
Software support	PSF for OS/390®; PSF/400; PSF/VSE; PSF/VM; Infoprint Manager for Windows NT® and Windows 2000; Infoprint Manager for AIX®; Network Port Monitor; Network Printer Manager			
Printer functions	Send and save; lpr remote printing; IPP support; Web pages; SNMP; e-mail notification/printing; connect and print; side/edge sensitivity; printer resource utility			
Copier functions	Storage of up to 250 jobs; stamping; covers; inserts; pre-scan jobs; program jobs; merging/edit files; reduction/enlargement; RADF for 100 sheets; batch mode			
Print drivers	Windows 95/98/Se/Me/Windows NT4.0/2000/XP 32 bit PostScript 3™/PCL 6 drivers; Mac OS 8.6–9.1/X/classic PS/PCL drivers; AIX 4.2x–3.3X/5L 32 bit PS/PCL drivers; Sun Solaris 7/8 Sparc drivers; SCO UNIX® Openserver 5 PS/PCL driver; HP-UX 11.00/11.20 PS/PCL drivers; Redhat Linux 8.0/7.1 PostScript 3 drivers			
Physical characteristics				
Base printer	Width 66.1" (1,678 mm)	Depth 28.9" (735 mm)	Height 58.1" (1,476 mm)	Weight 664 lbs (302 kg)
Printer and high-capacity feeder	87.3" (2,218 mm)	28.9" (735 mm)	58.1" (1,476 mm)	838 lbs (381 kg)
Power requirements				
North America	208V, 60Hz, 11 amps		208V, 60Hz, 12 amps	
EMEA	220-240V, 50/60Hz, 10 amps		220-240V, 50/60Hz, 12 amps	
Japan	200V, 50/60Hz, 11 amps		200V, 50/60Hz, 13 amps	

For expanded specifications, visit: ibm.com/printers/2085

¹ IBM does not recommend reaching this monthly maximum on a consistent basis.

² The IBM Infoprint 2105 cannot run more than 20,000 impressions per day or 440,000 impressions per month at temperatures between 81 and 84 deg. F (27 and 29 deg. C); and cannot run more than 10,000 impressions per day or 220,000 impressions per month at temperatures between 84 and 90 deg. F (29 and 32 deg. C).

Network status page—To help determine the cause of printing problems, operators and administrators can use the network status screen of the Infoprint 2085 and Infoprint 2105 to view the realtime status of various printer-related network communications.

IBM Infoprint Manager—The Infoprint 2085 and Infoprint 2105 integrate with IBM Infoprint Manager to help you effectively manage printing enterprisewide. With features such as remote management and monitoring, print-event notification and intelligent document routing and scheduling, Infoprint Manager offers exceptional scalability, adaptability and flexibility.

Offering exceptional performance and value

The high-function IBM Infoprint 2085 and Infoprint 2105 provide exceptional performance and can effectively handle your moderate monthly duty cycles at very high speeds—all at an attractive total cost of ownership.

The printing and copying functions allow for device consolidation and can help increase productivity. And the Infoprint 2085 and Infoprint 2105 are backed by unmatched IBM service—flexible maintenance options include customizable, comprehensive, global service and support.

For more information

To learn more about the IBM Infoprint 2085 and Infoprint 2105, call 1 800 358-6661 or visit:

ibm.com/printers/2085



© Copyright IBM Corporation 2002

IBM Printing Systems
Dept. HT7/001H
P.O. Box 1900
Boulder, CO 80301-9191
U.S.A.

Printed in the United States of America
04-02
All Rights Reserved

IBM, the IBM logo, the e(logo), the e-business logo, AIX, Infoprint, Intelligent Printer Data Stream, IPDS, OS/390, iSeries and zSeries are trademarks or registered trademarks of International Business Machines Corporation in the United States, other countries, or both.

Adobe and PostScript are either registered trademarks or trademarks of Adobe Systems Incorporated in the United States and/or other countries.

Microsoft, Windows and Windows NT are trademarks of Microsoft Corporation in the United States, other countries, or both.

UNIX is a registered trademark of The Open Group in the United States and other countries.

Other company, product and service names may be trademarks or service marks of others.

References in this publication to IBM products or services do not imply that IBM intends to make them available in all countries in which IBM operates.

IBM hardware products are manufactured from new parts, or new and used parts. In some cases, the hardware product may not be new and may have been previously installed. Regardless, our warranty terms apply.